



Pfizer Working together for a healthier world™
▶ Learn more



Become a member | Log In
Portfolio | Forbes Magazine - just \$1.15/issue

Forbes
U.S. EUROPE ASIA

Home Page for the World's Business Leaders

Free Trial Issue

 Search

 Stock Quote

- Home Lists Business Tech Markets Personal Finance Entrepreneurs Leadership ForbesLife Opinions Newsletters
Video ForbesWoman CEO Network Org Chart Wiki Mobile Portfolio Tracker Blogs E-mail Newsletters Special Reports

Press Release

IDEAL LIFE Presents First Option for "Universal Mobility" in Health and Wellness Management

05.11.10, 07:22 AM EDT



BusinessWire - IDEAL LIFE's

wireless, easy-to-use and affordable remote health monitoring system is now the first to offer universal mobile connectivity through compatibility with communication brands from Apple (including iPads) and AT&T to Verizon, Virgin Mobile and US Cellular. The complete range of "universal mobility" products offering true m-health will be displayed at IDEAL LIFE's booth #1323 at the American Telemedicine Association conference, May 16--18, in San Antonio, Texas.

"People today communicate in many ways and through many channels," said IDEAL LIFE President and founder Jason Goldberg. "In order for health monitoring solutions to become widely adopted, data capture must be automated to fit people's lifestyle, while data access must fall within healthcare providers' existing work flow. The process must fit into a lifestyle and workflow, it cannot be forced. Now, we've made it possible for people to connect through virtually any communication channel, with multiple gateways, brands of cell phones, tablets, computers, and PDAs."

The communication brands with which IDEAL LIFE is compatible include Apple, AT&T, Cricket, Google, HTC, LG, Nokia, Motorola, RIM, Samsung, Sony Ericsson, Sprint, T-Mobile, US Cellular, Verizon, and Virgin Mobile.

This dramatically expanded connectivity as a complete solution -- a first for the telehealth industry -- is made possible by IDEAL LIFE's mobile applications and cellular-based gateway product, the IDEAL LIFE Mobile Pod(TM), which is a new version of IDEAL LIFE's current gateway product. Using the IDEAL LIFE Mobile Pod(TM), patients simply take the measurement of their weight, blood pressure, or other health function, and the data is automatically communicated to their medical team completely wirelessly over cellular towers.

IDEAL LIFE's universal connectivity capabilities can impact the quality and availability of healthcare on a global level. At the recent World Health Congress, IDEAL LIFE's solutions for managing chronic disease were included as part of the "full response medical bag" seen as the solution to today's fragmented, expensive health care delivery system by presenter Dr. Patrick Soon-Shiong, M.D., Executive Chairman and CEO of Abraxis BioScience and Executive Director of the UCLA Wireless Health Institute. According to Dr. Shiong, this model of self-assembled health information and data collected at points of care that is available any time and anywhere is the key component for a sustainable health care model for both

Article Controls

- ✉ EMAIL
- 🖨️ PRINT
- 📄 REPRINT
- 📧 NEWSLETTER
- 💬 COMMENTS
- 🔗 SHARE
- 📢 YAHOO! BUZZ

Knightsbridge
human capital solutions

Forbes VIDEO NETWORK POWERED BY R2I INTEGRATED

Flash Player 9 is required to play this video
Click here to download.

Disney, EA Shares slide

Religion In The Classroom
Scholar Stephen Prothero aims to improve religious literacy through public education.

Economics Of Elder Care
Expert talks about the economic and emotional benefits of caring for parents at home.

📧 📄 🖨️ 📺 📱 📌 📄 📄 📄

Get Stories By Email

Select Topics:

cellular academic
 asthma ceo

Not a member yet? Join Now! Already a member? [Log In](#)

Enter Username Enter Email

Select Your Title Receive Special Offers?

FAQ | [Privacy Policy](#)

Ads by **Acblade™**

Mortgage APRs Hit 3.62%
Only 85,000 homeowners have taken advantage of Obama's refinance plan. Calculate new payment. [Learn more](#)

Stock Market Wealth
Learn to Trade Stocks and Options - It may be your key to wealth. Webinar Begins 5/24 (Scholarships) [Learn more](#)

Forbes.com Attaché

Channels

CLICK HERE TO Add Stories By Channel

Advertisement

Recommended Stories

America's Top Selling Cars

Forbes Attaché You Navigate. We Notice.

Recommended content based on your interests.

CLICK HERE TO Personalize Forbes.com

The Greenest Gasoline?

Westernized and Third World countries.

IDEAL LIFE's system is also unique in its capability to provide two-way communication between the patient and the provider or health coach. For example, the healthcare provider can send encouragement or reminders to the patient's device, and the patient can respond. For wellness-related devices such as pedometers, users can connect with their friends and family via social media sites such as Twitter and Facebook.

Related Stories

- [Kaiser Permanente Pushes For A Health-Care "Farmer's Market"](#)
- [McDonald's CMO Mary Dillon Gets Top Job At US Cellular](#)
- [Doyle Would Be Impressed](#)
- [Your Health In 2020](#)
- [Four Standard-Bearers For Stem Cell Therapies](#)

Stories

Videos

In addition to leading the industry in connectivity for universal mobility, IDEAL LIFE's devices are the most affordable on the market -- a fraction of the cost of other health monitoring systems. They also automatically

populate and integrate seamlessly with the provider's data collection systems and with electronic medical records, so that this vital data can be accessed at any time and at any location. IDEAL LIFE's system is also available in kiosks for use in community centers, assisted living centers, and other sites.

"IDEAL LIFE has definitely broken the price point glass ceiling. And no other remote monitoring vendor could provide customized reports or integrate with our current EMR system," noted Bonnie Perry Britton, MSN, Telehealth Clinical Network Director/Development Director, Roanoke Chowan Community Health Center, Ahoskie, NC.

With these innovations, IDEAL LIFE has made it possible, for the first time, to manage large populations of people with chronic illness or lifestyle improvement goals.

"Managing chronic illness and helping people live healthy lifestyles are the major challenges facing the healthcare system today," noted Goldberg. "By making health monitoring easy and affordable, we can help improve the health of millions of people."

IDEAL LIFE now has the largest installed base of remote health monitoring systems in the U.S., next to the Veterans' Administration, and the broadest range of applications, in hospitals, health plans, medical groups, home health agencies, community clinics, and academic medical institutions. IDEAL LIFE's systems are customized for the management of a variety of chronic illnesses including congestive heart failure, hypertension, diabetes, asthma and obesity.

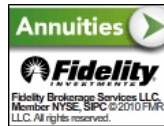
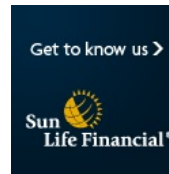
About IDEAL LIFE

IDEAL LIFE is a multinational company that delivers timely and accurate health information on demand, to any location, through collaborative solutions that are secure, reliable, and mobile -- accessible through the major brands for cell phones, computers and other communication devices. The FDA-approved products are wireless, easy-to-use and available for a fraction of the cost of competing products. With an open technology platform that supports customization and seamlessly integrates with existing information-based systems including electronic medical records, IDEAL LIFE eliminates the need for new software or data reconfiguration. Healthcare



80% Return In 14 Days!
Insider reveals all in this FREE live webinar. Learn to profit in any market condition. Sign Up Now! [Learn more](#)

Marriott.
HOTELS & RESORTS
where the driven go



Rate This Story

Your Rating ☆☆☆☆☆

Overall Rating ☆☆☆☆☆

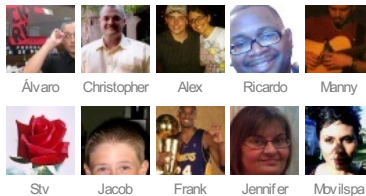
Reader Comments

Post a Comment

Forbes.com on Facebook



30,446 people like Forbes.com



Facebook social plugin

SOFTWARE FINDER

GO



[Content Management Software](#)
[Email Marketing Software](#)
[Project Management Software](#)

[Accounting Software](#)
[eCommerce Software](#)
[Help Desk Software](#)

[>> Browse All Directories](#)

Most Popular

- [1. Lessons From Our Mothers | Video](#)
- [2. Buffett And Munger: A Lasting Partnership | Video](#)
- [3. Charlie Munger On Goldman Sachs | Video](#)
- [4. The World's Billionaires | Story](#)
- [5. Disney, EA Shares slide | Video](#)
- [6. Marketing To Mom | Video](#)
- [7. Microsoft's New Office | Story](#)
- [8. Rags To World's Richest | Story](#)
- [9. America's Most Popular Drugs | Story](#)
- [10. Smart Money Likes Troubled Assets | Story](#)

Most Commented

- [1. India's Dirty War](#)
32 COMMENTS
- [2. Manuel Villar's Run for President](#)
18 COMMENTS
- [3. What We All Can Learn From Sarah Palin](#)
17 COMMENTS
- [4. The Follies of Fuel Efficiency](#)
14 COMMENTS
- [5. Can China Save GM?](#)
9 COMMENTS

[More >](#)

need for new software or data reconfiguration. Healthcare providers have a window of communication opened across their entire care continuum that is secure, automated and available across any communication channel. IDEAL LIFE products are designed for individuals with chronic conditions such as congestive heart failure, hypertension, diabetes, asthma, and obesity. For more information, visit www.ideallifeonline.com.

SOURCE: IDEAL LIFE

Scott Public Relations Joy Scott, 818-610-0270
joy@scottpublicrelations.com www.scottpublicrelations.com



Doyle Would Be Impressed

Phil Purcell On Goldman Sachs ▶


Kaiser Permanente Pushes For A Health-Care "Farmer's Market"

Salesforce Friends Facebook ▶


Reader Comments

Post a Comment


Ads by **Adblade**™



Drivers Overpay?
 6/17: Obama backs new insurance regulation. See if you qualify for new 2010 rates starting at \$1/day [Learn more](#)



Debt Stimulus Relief
 You can now legally erase up to 75% of your debt and save \$1000's. Apply today! [Learn more](#)



Home refi rates hit 3.62%
 Only 85,000 homeowners have taken advantage of Obama's refinance plan. Calculate new payment. [Learn more](#)

[SITEMAP](#) [HELP](#) [CONTACT US](#) [INVESTMENT NEWSLETTERS](#) [FORBES CONFERENCES](#) [FORBES MAGAZINES](#)

A d I n f o e r I n f a S i e o r n v F e o r A b d e v s e . R e s e a r c h I m p r o b i l i t e s / P e r m i s s i o n s
 S u b s c r i b e r i v S e r v i c e s t e m C o n d i t i o n s a n d N o t i c e s
 2 0 1 0 F o r b e s . c o m L L C ™ A l l R i g h t s R e s e r v e d

Forbes Digital









Distributed By



Tested By



Market Data by



Market Data by



Market Data by



Market Data by



Dow Jones industrial average, Nasdaq composite and S&P 500 indexes are real time and are powered by Xignite. All other indexes and commodities are delayed at least 15 minutes. All pricing is automatically refreshed every five seconds for the first two minutes the page is open, refreshed every 10 seconds for the third minute the page is open, and refreshed every 15 seconds thereafter.

the div